



# High Street

Wootton Village, Northampton

oriordanbond  
SALES & LETTINGS



## High Street

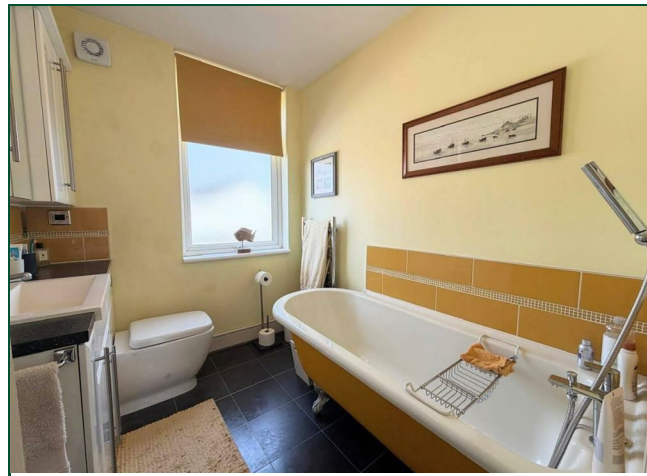
Wootton Village  
NN4 6LP

Price  
£275,000

The charming two double bedroom cottage is offered for sale within the ever popular Wootton village. This property is in close proximity of Wootton village shops and other amenities including Wootton Primary School.

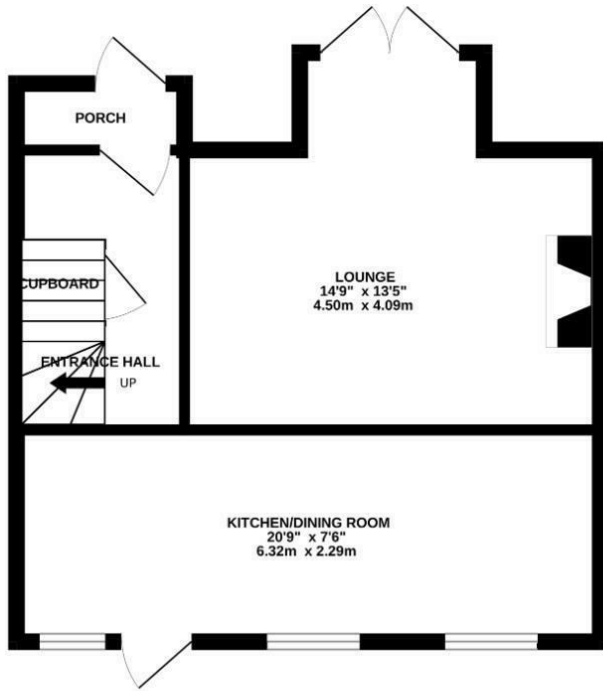
The accommodation comprises entrance hall, sitting room with bay window over the garden, kitchen/dining room, two first floor double bedrooms with shower area to the master and a three-piece family bathroom suite. Externally there are front and rear gardens, off road parking and a brick-built outhouse. Further benefits include gas radiator heating and uPVC double glazing. (B/754/S)

- Two double bedroom cottage
- Shower area to master bedroom
- Fitted kitchen/dining room
- Gas radiator heating
- Rear garden with brick-built outhouse
- Off road parking

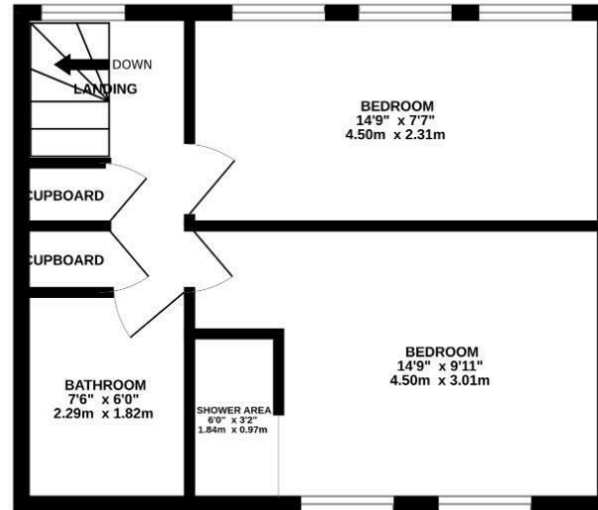




GROUND FLOOR  
392 sq.ft. (36.4 sq.m.) approx.

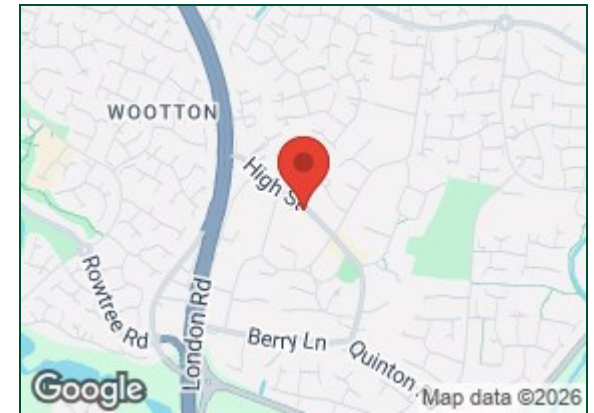


1ST FLOOR  
362 sq.ft. (33.6 sq.m.) approx.



TOTAL FLOOR AREA : 754 sq.ft. (70.0 sq.m.) approx.

Whilst every attempt has been made to ensure the accuracy of the floorplan contained here, measurements of doors, windows, rooms and any other items are approximate and no responsibility is taken for any error, omission or mis-statement. This plan is for illustrative purposes only and should be used as such by any prospective purchaser. The services, systems and appliances shown have not been tested and no guarantee as to their operability or efficiency can be given.  
Made with Metropix ©2023



#### Additional information

- Council Tax Band: B
- Energy Efficiency Rating: D

#### Viewing

Viewing strictly by appointment – details below

#### Disclaimer

O'Riordan Bond Estate Agents Limited has not tested apparatus, equipment, fittings or services and so cannot verify they are in working order. The buyer is advised to obtain verification from their solicitor or surveyor.

O'Riordan Bond Grange Park Sales  
01604 432007

grangepark@oriordanbond.co.uk

